

Parental controls guide

Nintendo Switch

Parental Controls information

Type of guide

Gaming consoles and platforms

Features and Benefits

To manage your child's safety on the console, there is a bespoke free app that you can use, that links to the device and enables you to set restrictions on the console directly.

What specific content can I restrict?



Browser Access



Chatting



Game Ratings



Innapropriate content

Timer

What do I need?

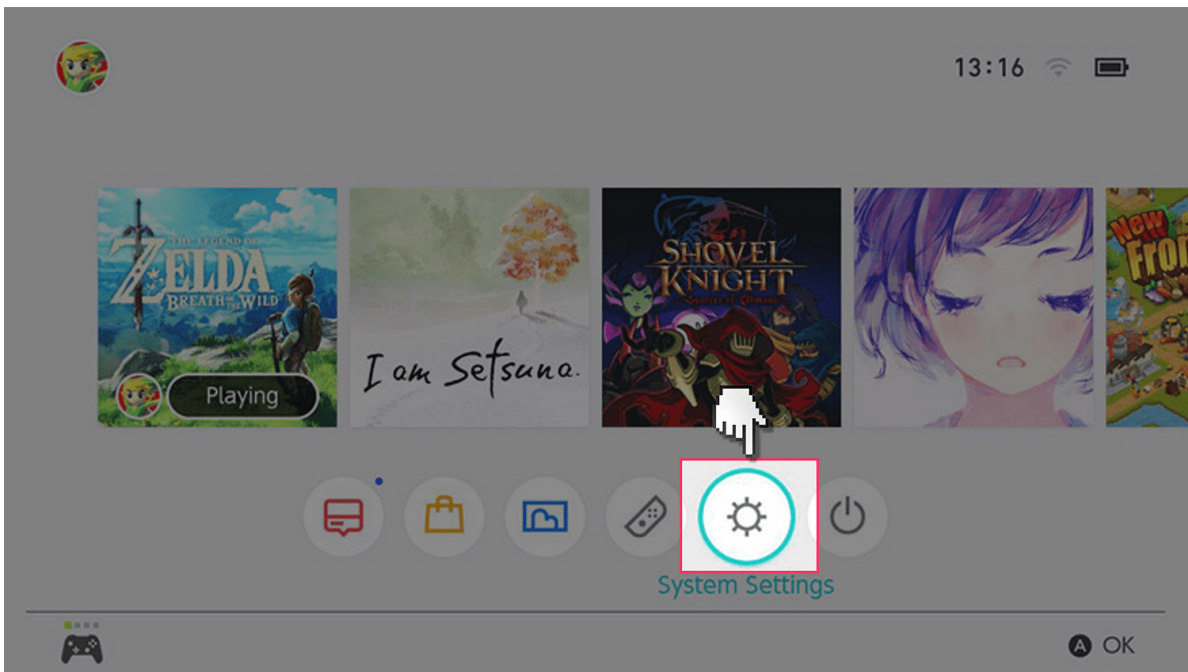
A Nintendo account (email address/Password)

Nintendo Switch

Step by step guide

1

Head to the 'System Settings' option on the main screen, either in handheld or docked mode.

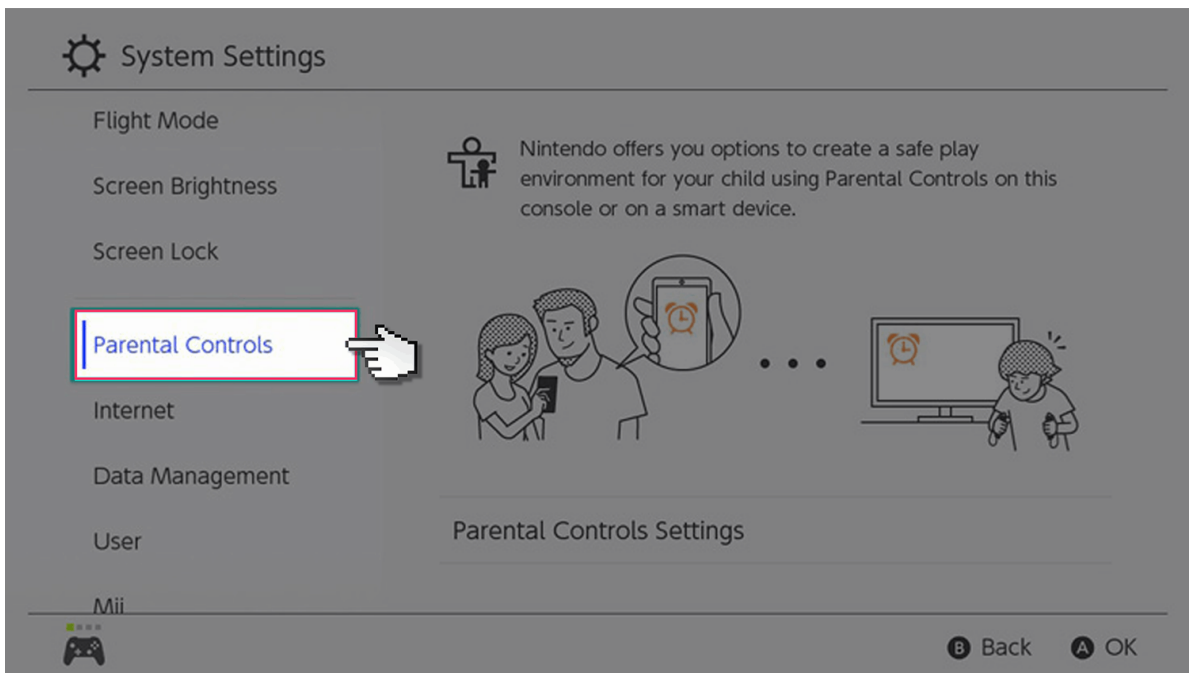


Nintendo Switch

Step by step guide

2

Scroll down the left-hand bar to the Parental Controls option and click (or tap if you are using the touchscreen). Click on the Parental Control Settings, the highlighted box on the right-hand side of the screen.

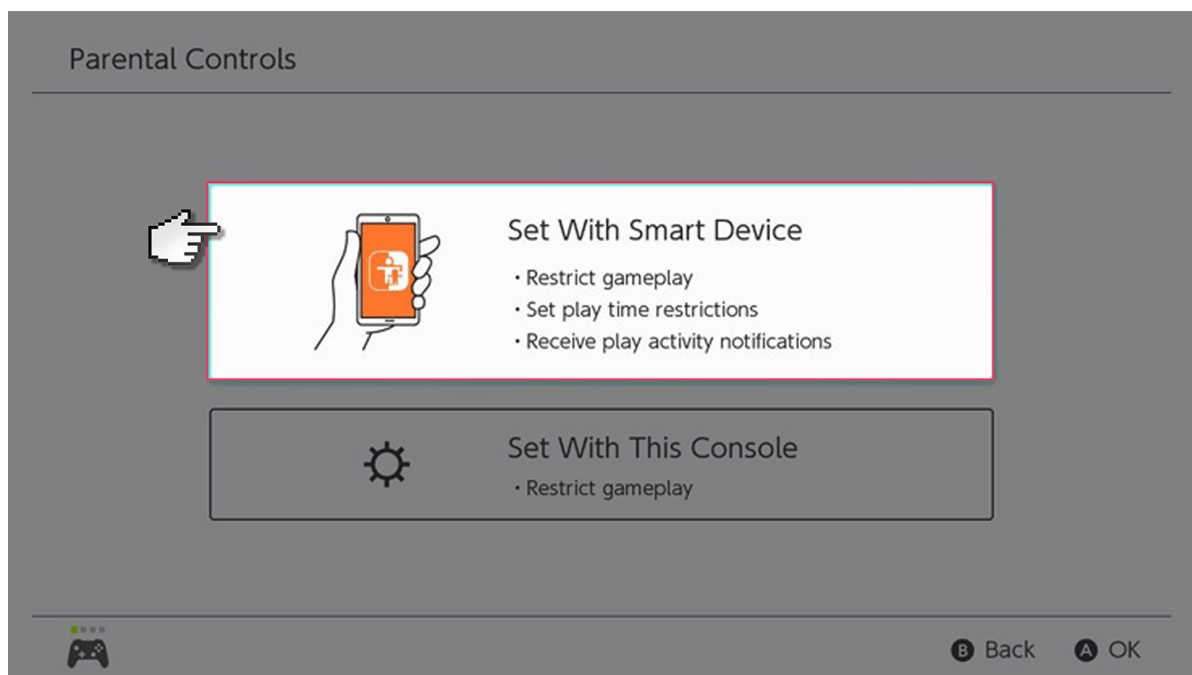


Nintendo Switch

Step by step guide

3

This will open a page that offers two options: you can either set simple parental controls by restricting the gameplay by age, so only games of a certain rating can be played, or you can set more complex parental controls through a dedicated smartphone app for iPhone or Android.



Nintendo Switch

Step by step guide

4

If you choose to restrict gameplay on the console itself, you can set the age limits of different features, such as the games and whether the user can post screengrabs taken on the Switch on social networks. Communication with other players can also be restricted. It is possible to link your Nintendo account with a child's Nintendo Switch profile, so they can purchase games from the online Nintendo eShop. If you have that option installed, you can also restrict those. The instructions are on the Switch in that case.

Set Parental Controls

Restriction Level

None



Restricted Software

Not restricted

Posting screenshots on social networks

Not restricted

Free communication with others

Not restricted

Content rating system

PEGI + BBFC (UK)

ATTENTION! If you need to adjust any of these settings, please set the restriction level to Custom.

Restricting Purchases in Nintendo eShop

This requires that you associate your child's Nintendo Account with your Nintendo Account. Access your account on a smart device or PC to create an account for your child or associate an existing account with yours. accounts.nintendo.com

Next



B Back

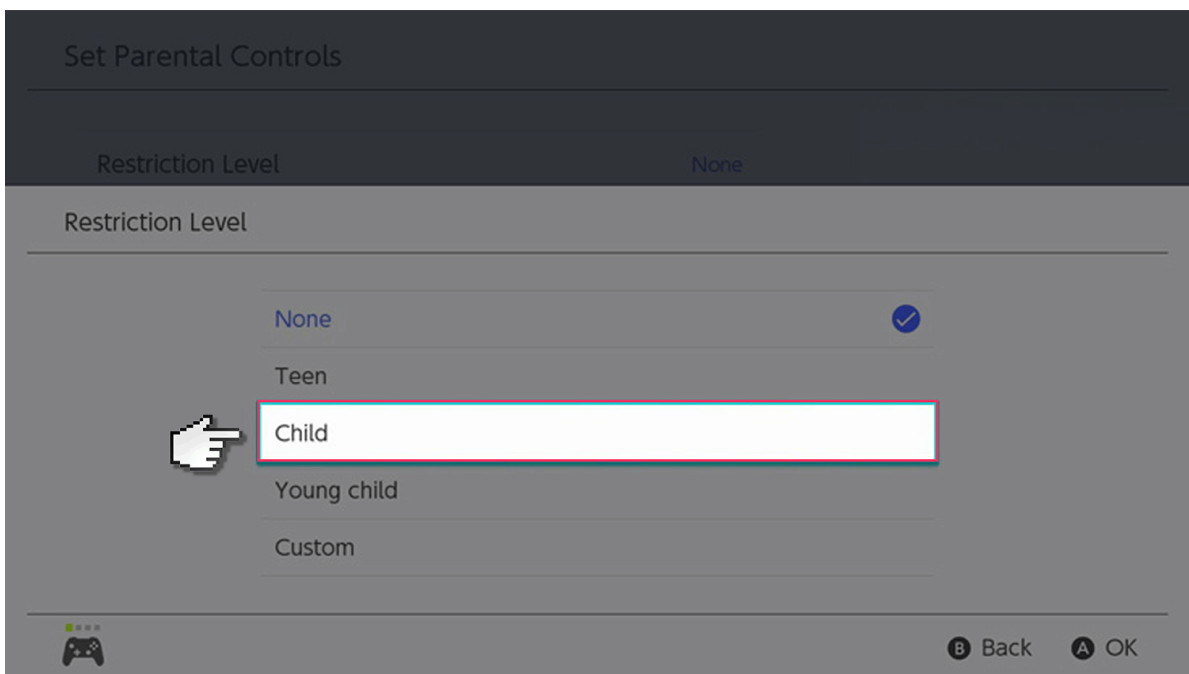
A OK

Nintendo Switch

Step by step guide

5

Restrict levels available to choose are Teen, Child, Young Child or you can customise the options yourself.

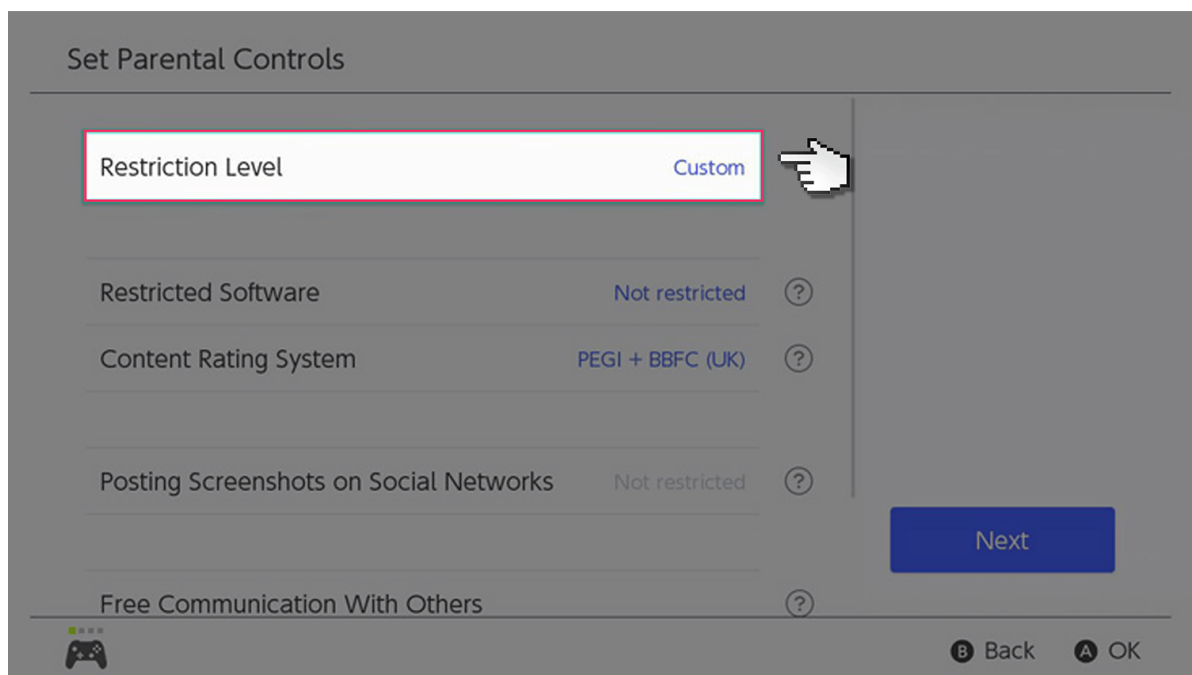


Nintendo Switch

Step by step guide

6

You can also set options through the Nintendo Switch Parental Controls app for iPhone and Android. Download it from your relevant app store on your smartphone and follow the instructions on screen. You will need to link it to your Nintendo Account and the Switch through a code that is sent. It is very simple to follow.



Nintendo Switch

Step by step guide

7

Once linked, you can not only use the app to set the content restrictions as per the options on the console itself, you can also use it to set the amount of play time a child can have. The console will not let them past the period determined. This can also be set per profile as you can set-up different profiles on the Nintendo Switch itself. This is done when the console is first used. Alternatively, you can add new “Users” in the ‘System Settings’ under the “User” tab.

